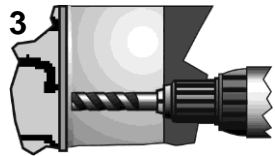
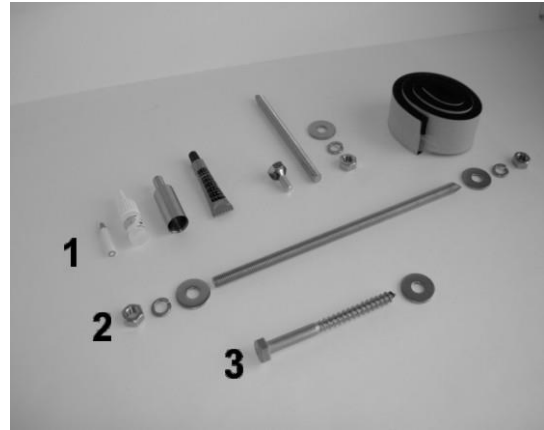


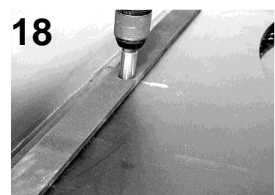
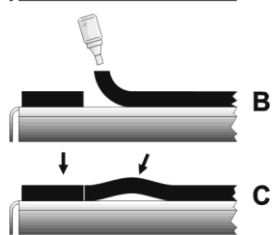
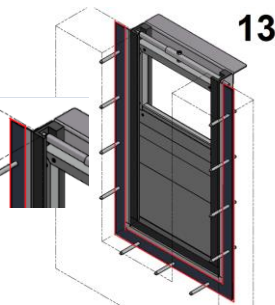
**Mounting supplies**

- A** A drill adaptor(s)
- B** A tube copper grease
- C** A white pencil
- D** A special drill can
- E** EPDM glue
- F** EPDM sealing strip
- G** Fix accessories\*

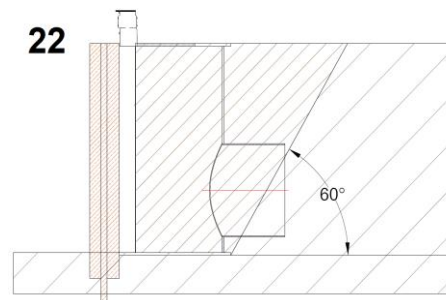


- Fix : \*2 - Wood with through hole studs. Holes 2 mm larger than stud diameter.  
\*3 - Wood with coach screws.

- 1 **Check : The concrete for firmness, flatness and level. Max. tolerance 2 mm per meter.**
- 2 Install the tilting weir in front of the hole and check on overflow being horizontal for the water level.
- 3 Pilot drill all the mounting holes.
- 4 Remove the fitting.
- 5 Drill the mounting holes through the material
- 6 Clean the fixing holes.
- 7 Apply copper grease to both **the nut side** of the studs.
- 8 Insert the studs using a hammer drill with attachment fitted.
- 11 Install the fitting.
- 12 Fasten the nuts by hand.
- 13 Make sure the fixing surfaces are clean and dry.
- 14 Mark the centre lines of the mounting holes on the flange using a white pencil.
- 15 Apply sealing strip to the frame flange , first at the bottom across the full width, then with over-lengths **(A)** on the left and right hand sides.
- 17 Apply a generous amount of adhesive to the mating faces **(B)** of the sealing strip. Press them firmly against the strip. **(C)**
- 18 Using the drill bush supplied, drill attachment holes in sealing strip.
- 19 Install the fitting.
- 20 Locate the washers and the spring washers over the studs.
- 21 Tighten the nuts to the correct loading.
- 22 Fill the back of the well (the hole) with sand for at least 60 degrees.
- 23 **Verify that the product is functioning correctly.**



- 40 Fit to wood \*3 : Install the product level in front of the opening. Pilot drill the mounting holes. Remove the fitting. Pre-drill the Ø 7 mm mounting holes. **See more at points 16 up to and including 21.** Screw the M10 coach screws in.
- 60 Tube connections ; - Thermal welding joint.  
- Double socket for an HDPE pipe or a uPVC pipe.  
- Conical tube end for a concrete pipe or a SPIROsol pipe using socket cement.  
- HDPE flange with flange drilling PN10.



- V** Trash screen/Debris trap : Available as an option.